

# Getting Started with NI-IMAQ™ for IEEE 1394 Cameras

Version 1.5.1

NI-IMAQ for IEEE 1394 Cameras provides driver support for Windows 2000/XP/Me/98 as well as LabVIEW Real-Time (RT) targets. The following sections describe how to start using NI-IMAQ for IEEE 1394 Cameras with your IEEE 1394 adapter card.

## Installing the IEEE 1394 Hardware

---

Begin by installing the IEEE 1394 adapter card. If you are using a third-party adapter, follow the manufacturer's installation instructions and then refer to the *Installing Your Driver Software* section of this document. If you are using an NI PXI-8252 device, refer to the following instructions.

### What You Need to Get Started

To set up and use the NI PXI-8252, you need the following items:

- PXI-8252 device
- Number 1 Phillips screwdriver

### Installing the PXI-8252

Complete the following steps to install the PXI-8252.

1. Shut down the operating system and power off the computer.
2. Seat the PXI-8252 firmly in any slot of the PXI chassis, other than Slot 1.
3. Use the number 1 Phillips screwdriver to tighten the top and bottom screws which secure the PXI-8252 in place.
4. Power on the system.

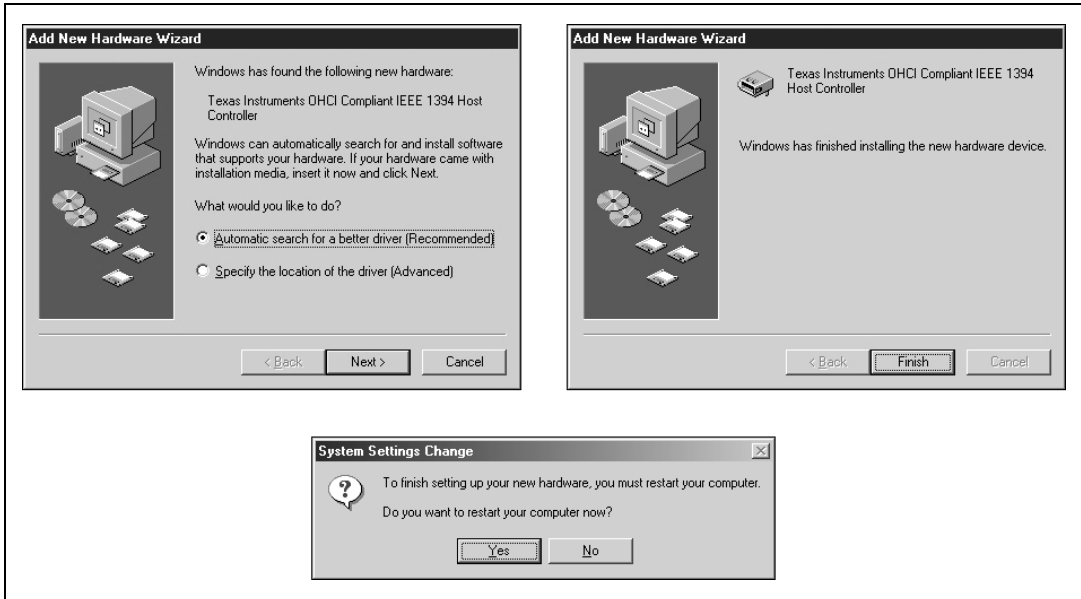
Depending on the operating system you are using, you may be prompted to answer a few questions. Refer to the following sections for assistance.

## Windows 2000/XP

Windows 2000/XP automatically detects the new card and installs the OHCI drivers. You may be prompted for the original Windows 2000/XP installation CD.

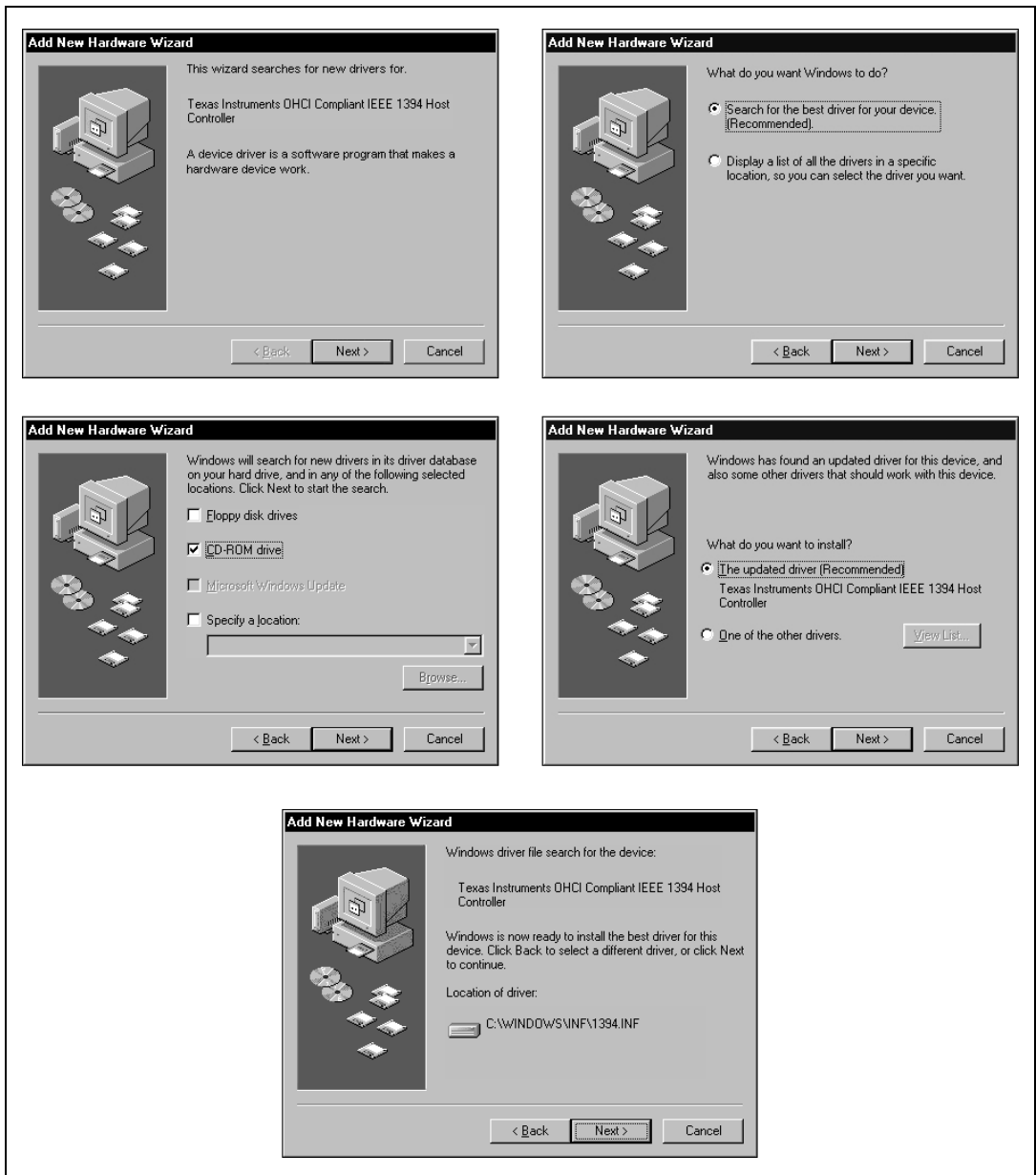
## Windows Me

Windows Me automatically detects the new hardware and launches the **Add New Hardware Wizard**. Choose the **Recommended** options when given a choice.

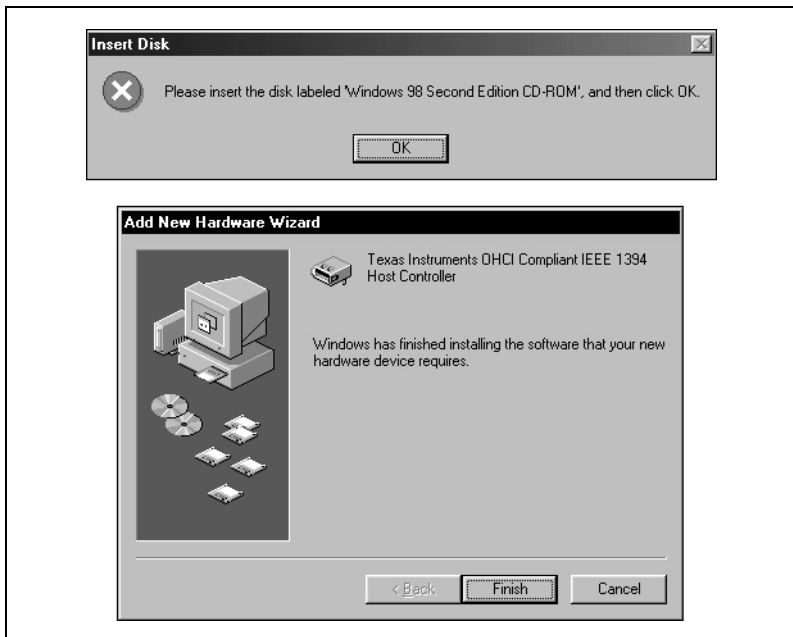


## Windows 98

Windows automatically detects the new hardware and launches the **Add New Hardware Wizard**. Choose the **Recommended** options when given a choice.



**Tip** If Windows launches a dialog box indicating it cannot locate a file on the Windows 98 CD, insert the Windows 98 installation CD and instruct Windows to copy files from either the top directory or the win98 directory of the CD-ROM drive (typically d: \ or d: \win98\).



## LabVIEW Real-Time

LabVIEW RT PXI systems do not prompt you at this time.

# Installing Your Driver Software

---

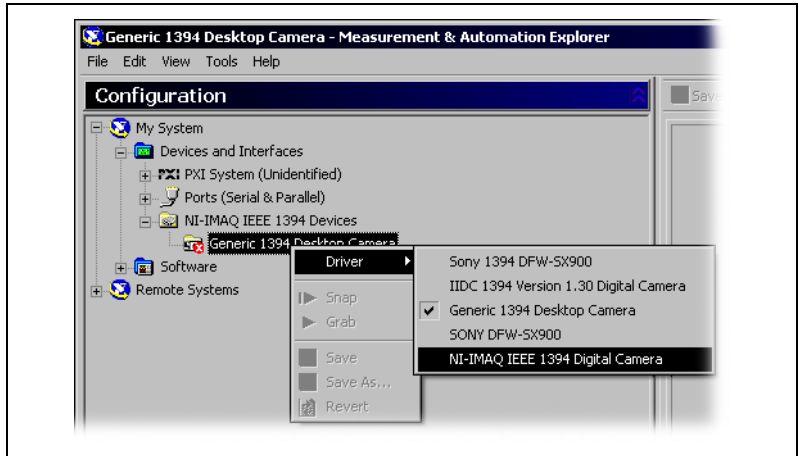
## Windows 2000/XP/Me/98

If you are using Windows 2000/XP/Me/98, complete the following steps to get started using NI-IMAQ for IEEE 1394 Cameras.

1. Disconnect all IEEE 1394 cameras.
2. Install the NI-IMAQ for IEEE 1394 Cameras software.
3. Connect your camera.
4. Run Measurement & Automation Explorer (MAX).
  - a. Double-click the MAX icon on your desktop. You can use MAX to modify camera properties. Once you have saved these properties, they become your default settings for all NI-IMAQ for IEEE 1394 Cameras or IMAQ Vision applications.
  - b. Click the plus sign next to Devices and Interfaces to display a list of your installed IEEE 1394 IMAQ devices.

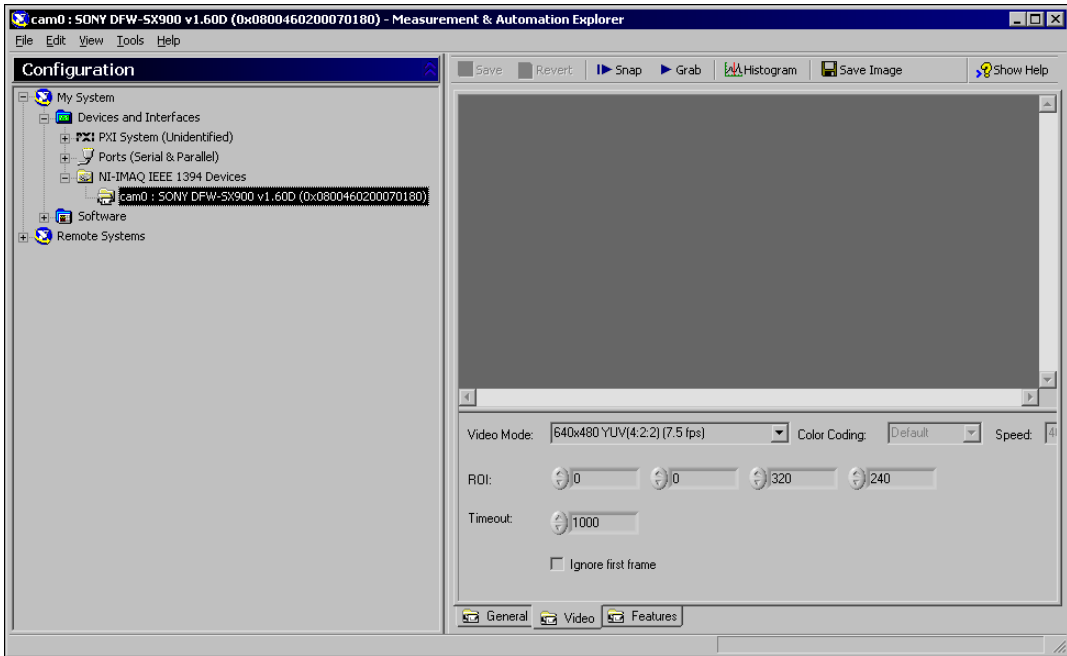


- c. If your camera does not show up as a NI-IMAQ IEEE 1394 digital camera, switch the driver by right-clicking the camera and selecting **Driver»NI-IMAQ IEEE 1394 Digital Camera**, as shown in Figure 1.



**Figure 1.** Switching the Camera Driver

- d. Select the camera from the menu. You can then view or modify the camera features from the **Properties Panel** located below the image viewer, as shown in Figure 2.



**Figure 2.** Setting the Camera Properties



**Tip** Click **Show Help** to display the help window on the right side of the image viewer. Move your mouse over the properties to view context-sensitive help in the bottom half of the help window.

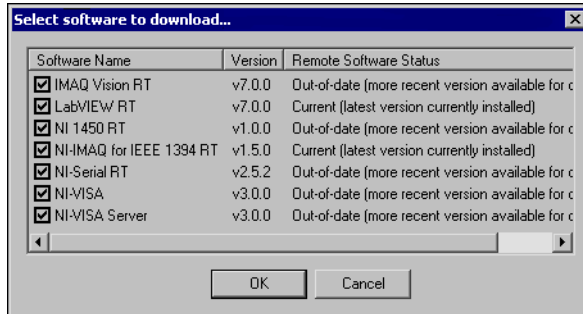
## LabVIEW Real-Time

If you are using a Windows development machine and a LabVIEW RT target, complete the following steps to get started using NI-IMAQ for IEEE 1394 Cameras:

1. Install the NI-IMAQ for IEEE 1394 Cameras software on your Windows development machine.
2. Run Measurement & Automation Explorer (MAX).
  - a. Double-click the MAX icon on your desktop. You can use MAX to modify camera properties. Once you have saved these properties, they become your default settings for all NI-IMAQ for IEEE 1394 Cameras or IMAQ Vision applications.
  - b. Click the plus sign next to **Remote Systems**. Your LabVIEW RT target should appear in the list if the target is connected to the same subnet as your host machine.



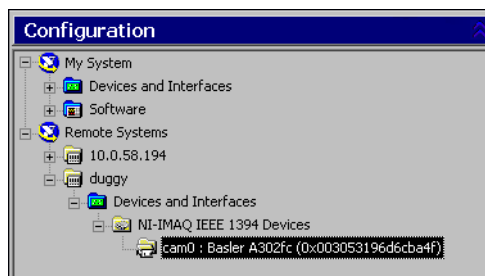
- c. Configure your network settings by selecting **Help»Remote Systems** and following the instructions found in the *MAX Remote Systems Help*.
- d. From the Software tab, click **Install Software**. Select **NI-IMAQ for IEEE 1394 RT**, as well as any additional software you would like to install on the target machine, as shown in Figure 3.
- e. Click **OK**.



**Figure 3.** Selecting Software for the Target Machine

MAX downloads the software to the target machine and prompts you to restart the remote device.

- f. Click **OK**.
- g. Connect your camera to your remote system.
- h. Restart your remote system and wait for the system to reconnect.
- i. Press the <F5> key to refresh the MAX configuration tree. Your IEEE 1394 camera should be listed in the Remote Systems tree, as shown in Figure 4.



**Figure 4.** Viewing the Camera on the Remote System

# Acquiring Images

---



1. Click **Snap** on the toolbar to acquire your first image.
2. Click **Grab** on the toolbar to acquire images continuously. This type of acquisition allows you to focus your camera.
3. Click **Save Image** on the toolbar to save the image.

